

Light Efficiency:

28 Lumen/Watt

Light Quality:

CRI: 67.9

Color Temperature:

6576 K

Output: 2585 lm

Peak: 4684 cd

Power: 91.5 W

PF: 0.99



Beam Angle

38.4°

Product Name:

ZCL BAR 300 IP

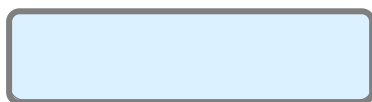
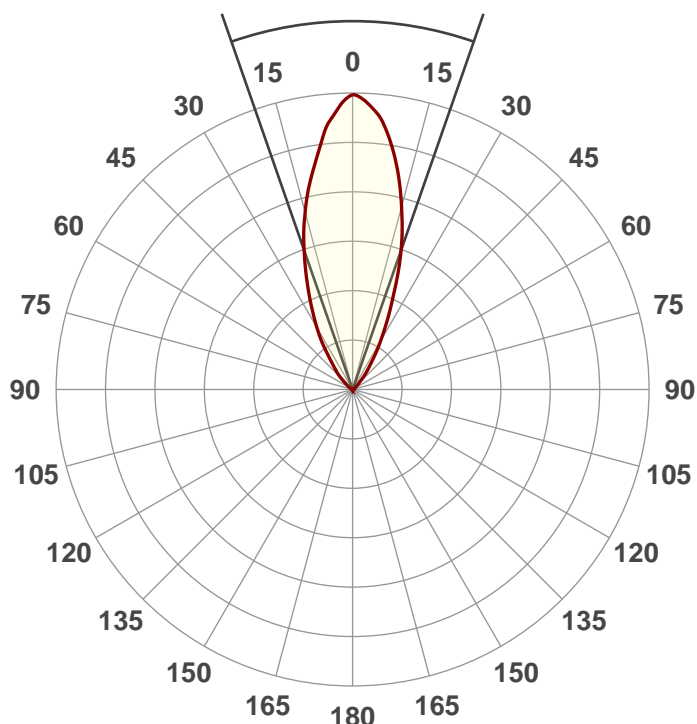
Test:

Zoom In White

Date:

2/20/2018

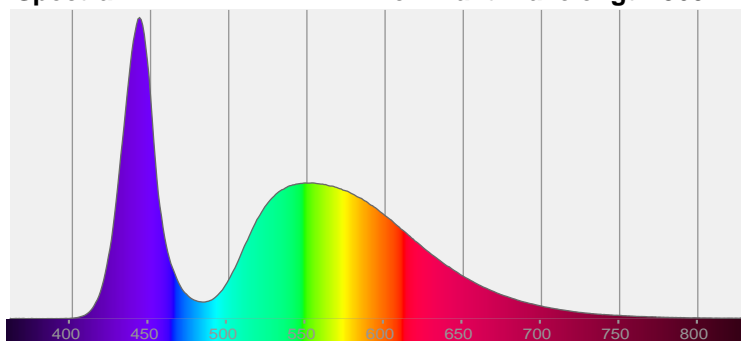
Note:



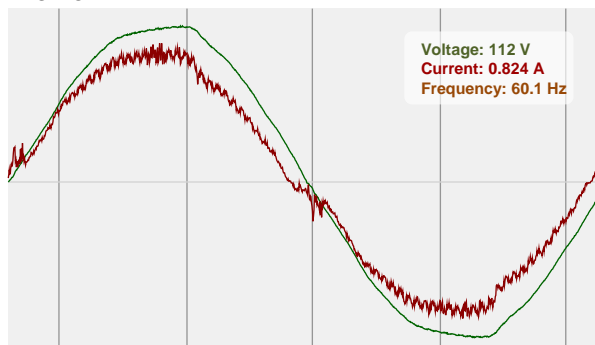
CIE 1931
x: 0.313
y: 0.316

Spectra

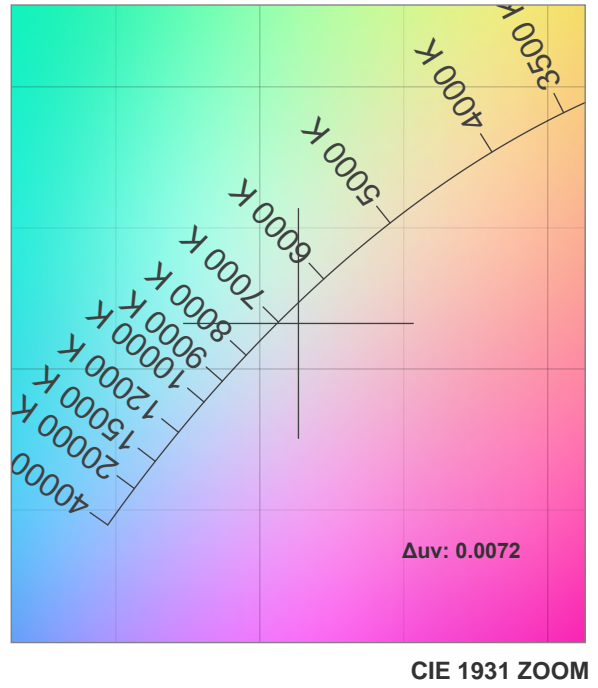
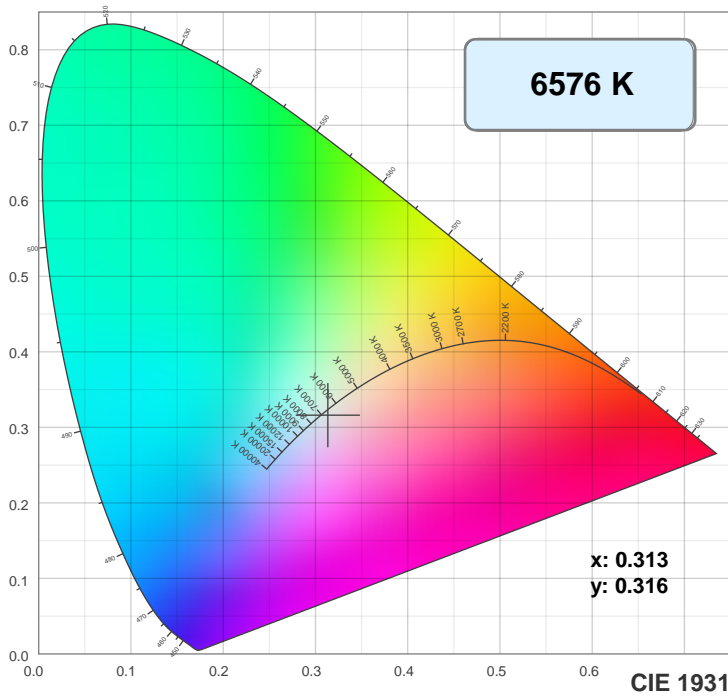
Dominant Wavelength: 360nm



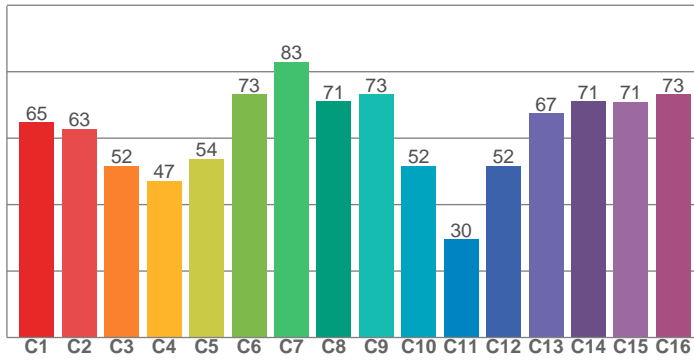
Power



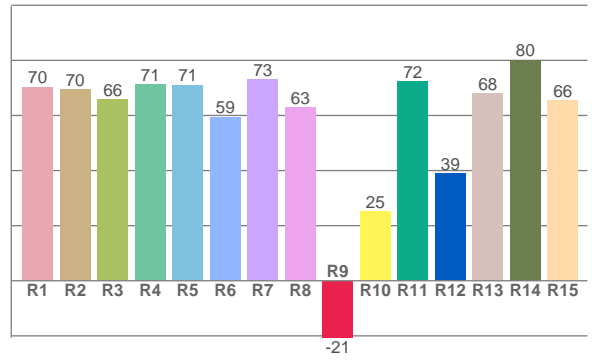
Color Details



TM30: 61.1



CRI: 67.9 (R1-R8)



CRI R values, only R1-R8 are used to calculate final CRI value

R1	R2	R3	R4	R5	R6	R7	R8	R9	R10	R11	R12	R13	R14	R15
70.4	69.6	65.7	71.2	71.1	59.5	73.2	62.8	-20.6	25.1	72.3	39.1	68.0	80.2	65.6

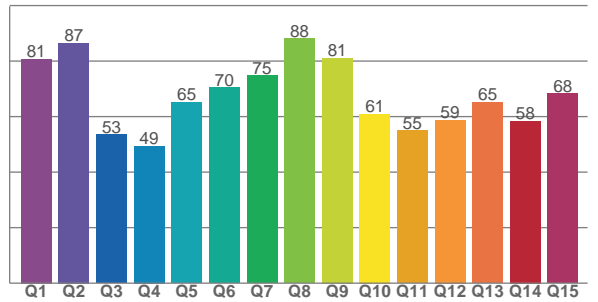
TM30 C values, 16 binned values out of total of 99 C values

C1	C2	C3	C4	C5	C6	C7	C8	C9	C10	C11	C12	C13	C14	C15	C16
64.8	62.9	51.7	47.1	53.8	73.2	82.9	71.1	73.2	51.6	29.5	51.7	67.5	71.1	71.0	73.2

CQS Q values

Q1	Q2	Q3	Q4	Q5	Q6	Q7	Q8	Q9	Q10	Q11	Q12	Q13	Q14	Q15
80.7	86.5	53.5	49.5	65.1	70.4	74.7	88.1	81.1	60.9	54.9	58.7	65.2	58.4	68.3

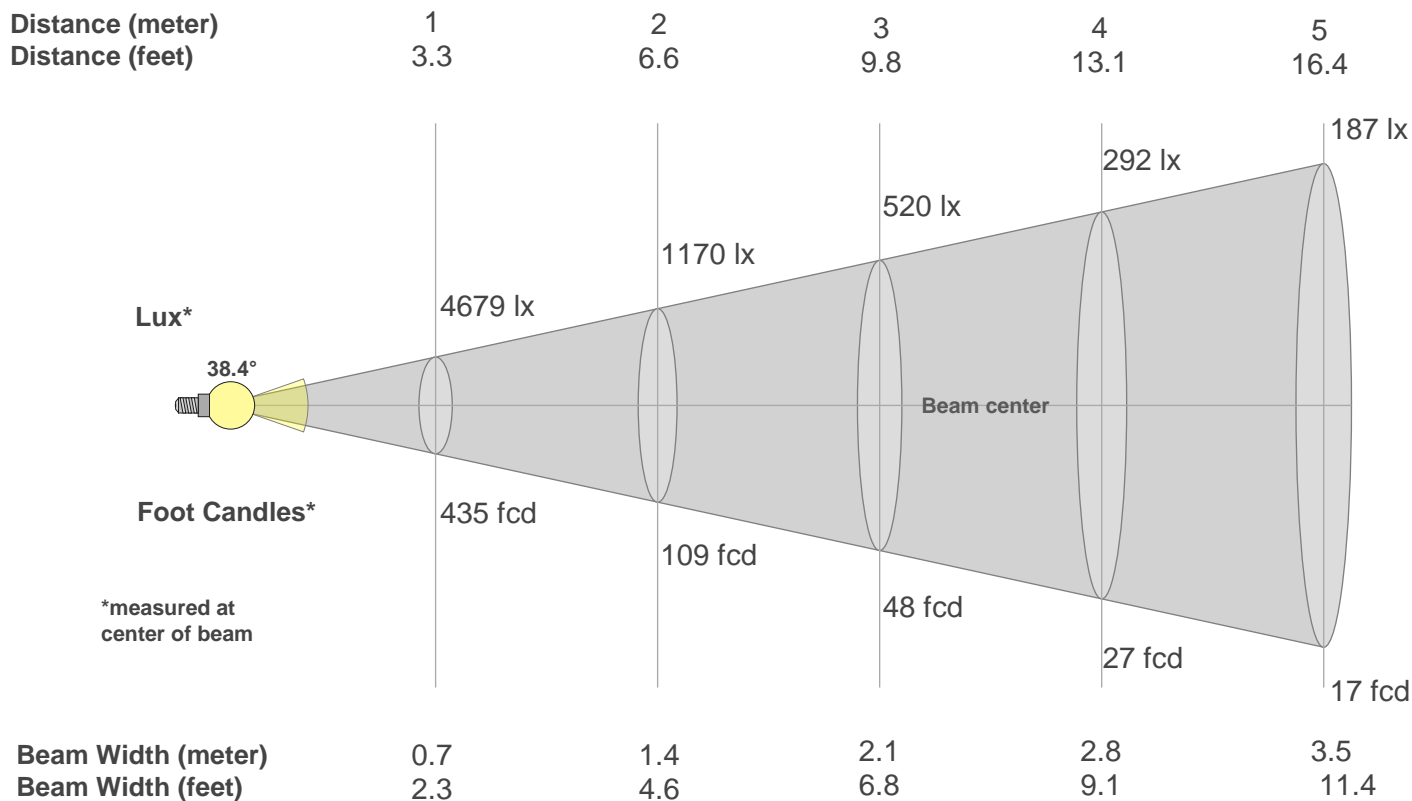
CQS: 65.6



Color Parameters

Color Temperature	Color Rendering Index	Red Component	Color Fidelity	Color Gamut	Color Quality Scale	Color Coordinate CIE 1931	Color Coordinate CIE 1931	Color Coordinate	Color Coordinate	Color Deviation from Black Body
CCT	CRI	CRI R9	TM30 Rf	TM30 Rg	CQS	x	y	u	v	Δuv
6576 K	67.9	-20.6	61.1	96.6	65.6	0.313	0.316	0.203	0.308	0.0072

Beam Details



Beam Intensities from 1-20m

m	1	2	3	4	5	6	7	8	9	10	11	12	13	14	15	16	17	18	19	20
ft	3.3	6.6	9.8	13.1	16.4	19.7	23	26.2	29.5	32.8	36.1	39.4	42.7	45.9	49.2	52.5	55.8	59.1	62.3	65.6
lx	4679	1170	520	292	187	130	95	73	58	47	39	32	28	24	21	18	16	14	13	12
fcd	434.7	108.7	48.3	27.2	17.4	12.1	8.9	6.8	5.4	4.3	3.6	3	2.6	2.2	1.9	1.7	1.5	1.3	1.2	1.1

Intensities in 0° C-plane

0°	2°	4°	6°	8°	10°	12°	14°	16°	18°	20°	22°	24°	26°	28°	30°	32°	34°	36°	38°
4679	4566	4365	4150	3844	3569	3315	3053	2782	2516	2235	1975	1733	1513	1313	1136	971	802	647	530
100%	98%	93%	89%	82%	76%	71%	65%	59%	54%	48%	42%	37%	32%	28%	24%	21%	17%	14%	11%

Intensities in 90° C-plane

0°	2°	4°	6°	8°	10°	12°	14°	16°	18°	20°	22°	24°	26°	28°	30°	32°	34°	36°	38°
4679	4566	4365	4150	3844	3569	3315	3053	2782	2516	2235	1975	1733	1513	1313	1136	971	802	647	530
100%	98%	93%	89%	82%	76%	71%	65%	59%	54%	48%	42%	37%	32%	28%	24%	21%	17%	14%	11%

Intensities in 180° C-plane

0°	2°	4°	6°	8°	10°	12°	14°	16°	18°	20°	22°	24°	26°	28°	30°	32°	34°	36°	38°
4679	4618	4486	4323	4076	3795	3492	3171	2848	2539	2210	1873	1558	1305	1081	891	726	576	461	373
100%	99%	96%	92%	87%	81%	75%	68%	61%	54%	47%	40%	33%	28%	23%	19%	16%	12%	10%	8%

Intensities in 270° C-plane

0°	2°	4°	6°	8°	10°	12°	14°	16°	18°	20°	22°	24°	26°	28°	30°	32°	34°	36°	38°
4679	4618	4486	4323	4076	3795	3492	3171	2848	2539	2210	1873	1558	1305	1081	891	726	576	461	373
100%	99%	96%	92%	87%	81%	75%	68%	61%	54%	47%	40%	33%	28%	23%	19%	16%	12%	10%	8%

Beam Angle 50%	Field Angle 10%	Cutoff Angle 2,5%	Intensity Ratio in 120° Cone	Intensity Ratio in 90° Cone
38.4°	75.2°	98.1°	98.0%	93.3%